



## TecLab - Optical Oxygen-Sensor

### Glass fiber-optic for QS and F&E

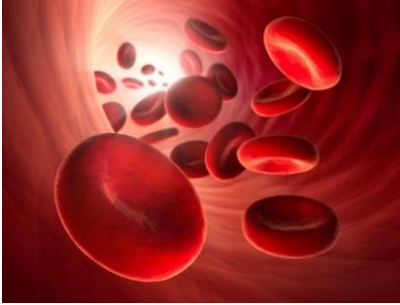


- Opto-chemical O<sub>2</sub> sensor system for gases and fluids (pH 0-13)
- Glass fiber-sensor 0,4mm diameter in flexible protective hose, max. 4m
- Measurement at the needle tip - no gas extraction
- For smallest gas- and fluid volumes
- Factory calibrated – no periodical calibration necessary - plug and play
- Self diagnostic system
- Short measurement time, < 5s

### Applications:



- Pharma industry and biotechnology
- Food industry / MAP-packaging
- Beverage industry / headspace
- Hygiene / detection of microbial infections
- Biochemical and molecular biological R&D



## Measuring of O<sub>2</sub> in:

- MAP-packaging, smallest volumes possible (MAP-blister container, etc.)
- Headspace-measurements in beverage bottles, tanks
- In injection syringes, vials, cells growth containers, well plates
- Micro - bioreactors
- In molecular biological to monitor cell and tissue O<sub>2</sub> supply
- Medical R&D - online monitoring of tissue O<sub>2</sub> supply

## Package:

- Portable device with self-diagnostic-system, with tablet PC and blue-tooth connection or as labor system with PC connection
- Glass fiber-sensor factory calibrated
- Intuitive measurement-software for Windows, password protected, Excel-compatible files for QS

## Performance:

### Gas

### Fluids

- |                             |  |                              |
|-----------------------------|--|------------------------------|
| • Measurement range:        | 0.05 – 25% Vol.%                                     | 0 – 10 (20)mg/L              |
| • Accuracy (*):             | ± 0.01% or   | ± 0.05mg/l or                |
| (*...higher value is valid) | < ±2% (measurement value)                            | < ±1% (measurement value)    |
| • Resolution:               | <0.01%   | < 0.02mg/l                   |
| • Response Time:            | < 1 s  | ca. 10s                      |
|                             |  | (< 30s in aggressive fluids) |
| • Calibration at:           | 20° / 25° / 37° (additional temperatures on request) |                              |
| • Dimensions:               | 18x 8x 4cm (LxBxH)                                   |                              |